

# THE CUTTER

Outward  
Bound®

TE KARERE O ANAKIWA THE BI-ANNUAL ANAKIWA MESSENGER

## 50<sup>TH</sup> ANNIVERSARY CELEBRATIONS KICK OFF



One of the largest events in Outward Bound's history was staged with the 'Branson Live in Auckland' event on October 20<sup>th</sup> 2011.

The event brought together many elements: Rugby World Cup excitement; entrepreneur Sir Richard Branson; the generosity of many auction donors, the support of principal sponsors BNZ and Auckland City, and an impressive turnout of over 1,300 people. Special guests included Rachel Hunter, Sir Michael Hill, Sir Peter Leitch, designer Annah Stretton, with a supply of All Blacks including Josh Kronfield, Inga Tuigamala and Frank Bunce adding to the night.

Guests were wined and dined at Auckland's Viaduct Events Centre while they took part in both live and silent auctions featuring a number of highly sought after items. Highlights of the live auction included: a lunch for 10 people onboard Sir Michael Hill's super yacht hosted

by Rachel Hunter and former English rugby player Martin Bayfield (\$15,000); a 10 course dinner prepared by Simon Gault with Prime Minister John Key in attendance (\$20,000); a rare collection of 12 rugby jerseys at \$7,000 each signed by every Rugby World Cup winning captain in history, with space reserved for one final signature – which will be Richie McCaw's (total \$84,000); Topping the bill was a one-hour live performance 'in home' by New Zealand's iconic musician Dave Dobbyn which fetched the highest bid of the night at \$35,000.

During the evening, Sir Richard spoke for close to an hour about his own life story and lessons from his achievements. Another highlight was Outward Bound spokesperson and former All

Blacks captain, Gary Whetton, who entertained the audience with his own Outward Bound experience as a 21 year-old. Six months after his course Gary became an All Black. "I wouldn't have been an All Black at that time without Outward Bound", said Gary. Highlights from the Outward Bound documentary to be released next year were also shown.

Outward Bound Chief Executive Officer, Trevor Taylor, said the evening had an unbelievable outcome for Outward Bound.

"The amount raised for Outward Bound has surpassed all our expectations. We are extremely grateful to all the guests who attended the gala dinner, the major sponsors - BNZ and Auckland City - and all others who so generously gave to help support Outward Bound."

Trevor said the funds raised would be used to help ensure that more young New Zealanders have the opportunity to take up the Outward Bound challenge.

It was a truly memorable night for Outward Bound and an outstanding success.

**"AS WE ENTER OUR 50<sup>TH</sup> ANNIVERSARY YEAR, THIS FUNDING BOOST COULDN'T HAVE COME AT A BETTER TIME AS IT WILL ENABLE US TO ENSURE THAT THE COST OF ATTENDING AN OUTWARD BOUND COURSE DOESN'T BECOME A BARRIER FOR PEOPLE."**

PHOTO | GRANT ARMISHAW PHOTOGRAPHY – GRANT ATTENDED OB IN 2006

FOLLOW US:



Outward Bound Trust of New Zealand PO Box 25274, Panama Street, Wellington 6146

P: (04) 472 3440 or 0800 OUTWARD E: info@outwardbound.co.nz W: www.outwardbound.co.nz





## 50<sup>TH</sup> ANNIVERSARY EVENTS...

The calendar of events was kicked off in style with the Sir Richard Branson event, but we have many more events in store to celebrate our 50<sup>th</sup> Anniversary in 2012, many of which you can be involved in.

Below is a sneak peek into the schedule of exciting events we are planning (some exact dates to be confirmed).

### MARCH

#### 50<sup>TH</sup> ANNIVERSARY GOLF TOURNAMENT

EVENT: Multi-team golfing event

WHERE: Gulf Harbour, Whangaparaoa

#### KATHMANDU ADVENTURE RACE SERIES

EVENT: Multi-sport adventure race: running, mountain biking, kayaking event

WHERE: Anakiwa - Marlborough Sounds

### APRIL

#### DOCUMENTARY PREMIERE

EVENT: The stunning 45 minute documentary on Outward Bound New Zealand as seen through the eyes of our Alumni.

WHERE: Peter Jackson's Park Road Studios - Wellington

### SEPTEMBER

#### BLACK TIE DINNER

EVENT: The Official 50<sup>th</sup> Anniversary Celebration Function

WHERE: Auckland War Memorial Museum - Auckland

### OCTOBER

#### OUTWARD BOUND STAFF REUNION

EVENT: A reunion for Outward Bound Staff

WHERE: Anakiwa - Marlborough Sounds

INFO: Email: [ssutherland@outwardbound.co.nz](mailto:ssutherland@outwardbound.co.nz)

### NOVEMBER

#### THE ALUMNI HALF-MARATHON

EVENT: The Alumni half-marathon to be run in conjunction with a course finish at Anakiwa. This memorable occasion will see Alumni able to run alongside current students who are completing their course.

WHERE: Anakiwa - Marlborough Sounds.

## REGIONAL EVENT WANT TO HELP?

We are also looking for council members or past participants to help co-ordinate regional functions throughout the year to celebrate what Outward Bound has done for youth in their communities.

If you are interested in co-ordinating an event in your area contact John Lister, our 50<sup>th</sup> Anniversary Project Manager  
[jlister@outwardbound.co.nz](mailto:jlister@outwardbound.co.nz)

# IS OB ON YOUR CV?

GET THE EDGE OVER YOUR COMPETITORS  
WITH OUTWARD BOUND CLASSIC



OB Classic is 3 weeks action packed full of adventure, challenge, reward and amazing friendships. It's an achievement that can guide your next decisions.

SPACES AVAILABLE – FEBRUARY • MARCH • APRIL 2012

[www.outwardbound.co.nz/classic](http://www.outwardbound.co.nz/classic)

# ACTIVATE!

Outward Bound has re-launched its course for people who have a physical disability and given it a brand new name: **ACTIVATE!**

One of Outward Bound's adapted courses, Activate has been modified to suit people aged 18 years and over who have a physical disability, including those who use manual wheelchairs, crutches or walkers. Like any Outward Bound course, participants on Activate will get outside their comfort zone and push their limits trying activities like sailing, high ropes and kayaking, all in a safe and supportive environment.



FIND OUT MORE ABOUT **ACTIVATE**  
[www.outwardbound.co.nz](http://www.outwardbound.co.nz)  
0800 OUTWARD

**“WORKING WITH THE TEAM WAS JUST AMAZING. THE INSPIRATION CAME FROM ONE OF OUR WATCH MATES WHO HAD MULTIPLE SCLEROSIS. HER ATTITUDE WAS TRULY AMAZING.”**

## LIVING THE DREAM AT OUTWARD BOUND



Kathmandu's Live the Dream scholarships gave four lucky winners the chance to unlock their true potential at Outward Bound this year. So far three of the four winners have completed their course.

Natalie Keenan of Lake Coleridge (near Darfield) said she wanted to attend Outward Bound for self-discovery after a major family tragedy in which she lost her two youngest children in an accident. “We worked so hard to deal with that the best we could and now, six years on, I hit a real turning point Natalie said, “I realised I had carried our loss as a weakness and that affected my confidence greatly. I have now come to realise it is a strength that we, as a family, have worked so hard to get to where we are now.” Natalie recounts her rock climbing

experience during her June Discovery course as a huge test of her confidence. She said she felt overwhelmed by the responsibility to direct blindfolded members of her team up the rockface, but with the help of an instructor, she guided her watchmate to the top. “I will always look back on that as an amazing moment of being sure I couldn't do it, but I did have it in me,” she says.

For 21-year old Michael Harvey of Auckland, his desire to complete an Outward Bound course came after a personal journey of self-discovery led him to believing he could achieve more. Michael had turned his life around career-wise, but felt he had let some valuable opportunities pass him by and wanted to challenge himself to find out what he was capable of. He said he gained more confidence and self-belief after completing his 21-day Classic course in June.

Judy Frith from Auckland really wanted to expand her world when she embarked on her Aspire course in August. As a mother of seven, Judy has seen two of her children return from Outward Bound and says she witnessed first-hand the incredible impact it had on their lives. Judy had been doing some competitive walking and after spotting the Kathmandu scholarship, she decided it was going to be her next mission! On returning from her week at Anakiwa, Judy said she gained a sense of self-belief knowing that she could achieve so much more. “Working with the team was just amazing. The inspiration came from one of our watch mates who had Multiple Sclerosis. Her attitude was truly amazing,” Judy said.

GINNY SEMMENS,  
OUTWARD BOUND COUNCILLOR & PAST PARTICIPANT

  
**Kathmandu**<sup>®</sup>  
live the dream™

Kathmandu's **Live The Dream Scholarships** are part of a sponsorship partnership with Outward Bound. Entries are made annually from customers and visitors to Kathmandu's stores nationwide and via the Kathmandu website.

[www.kathmandu.co.nz](http://www.kathmandu.co.nz)

**PHOTOS | TOP** NATALIE DIRECTING HER WATCHMATES ON THE ROCKWALL  
**ABOVE** NATALIE AND HER WATCH





Outward Bound®  
PROFESSIONAL

MANAGE YOURSELF  
**LEAD** OTHERS

## WHERE THE RUBBER MEETS THE ROAD...

After five months in my role as Marketing Manager at Outward Bound, at last my time had come to complete my own course.

I joined 13 other watchmates for the Navigator Leadership programme on August 20. I had those familiar mixed feelings - this was a week after the snowstorms that had gripped the country after all - and excitement and anticipation that this would be all that I'd hoped it would be, up there on my own bucket list.

Well, it was everything I could have wanted - demanding, challenging, intense, unbelievably humorous and immensely satisfying. From dawn to dusk, we were kept on our toes and kept sharp under the amazingly skilful guidance of instructors Rob de Leeuw, Philippa Russell and our facilitator Tania Gough. The Navigator mixes leadership theory and workshops with immediate

implementation where you have to turn around and make it work. It is a dynamic and practical example of the "rubber meeting the road".

Across the challenges of the high ropes course, rock climbing, sailing, solo and tramping, we pushed ourselves and worked as a team. We made firm friends and took away lessons that we would not have learnt anywhere else. The X-Factor for me though, was time; time to discuss and to reflect, to absorb. Taking eight days out of my own schedule was worth every minute and has given me a deeper insight into the magic that is Outward Bound.

*Ian Rogers, Marketing Manager*



PHOTO | IAN AT THE HELM OF THE NEWLY REPAIRED MATAHORUA

ADVENTURE THROUGH TEAM WORK



**NEXT NAVIGATOR**  
**TUESDAY 28 FEBRUARY 2012**  
**BOOK YOUR SPOT NOW!**

### UPCOMING COURSES

**NAVIGATOR** • 12-19 March 2012

Leadership Development

**COMPASS COURSE** • 12-19 March 2012

Training Emerging Talent

# OUR SUPPORTERS MAKING AN IMPACT...



## PUB CHARITY

In the past year communities throughout New Zealand have benefited greatly from a Pub Charity grant.

137 young people aged 13 to 26 years from Auckland, Bay of Plenty, Canterbury, Gisborne, Hawkes Bay, Manawatu, Wanganui, Taranaki, Nelson, Tasman, Otago, Southland, Waikato, Wairarapa, Wellington and West Coast received funding assistance towards achieving their dream of attending Outward Bound.

The partnership between Outward Bound and Pub Charity has provided Outward Bound with many opportunities to work with local organisations to set up new scholarship initiatives in communities we have previously not worked with before. There has been a clear benefit to many as is shown in the moving thank you letters students have sent to us. The grant also allowed us to offer 24 full scholarships to young people from Canterbury who were affected by the February earthquakes.

"One of the most rewarding parts of my job is reading the letters of appreciation that we receive from students following their course. Many of these students, due to their individual circumstances, would not have been able to consider Outward Bound as an option were it not for the financial support provided from our many supporters. Pub Charity has over a number of years been such a great supporter, and through this support has enabled us to assist a large number of New Zealanders." *Trevor Taylor, Outward Bound CEO*

**"A VERY BIG THANK YOU TO PUB CHARITY FOR SPONSORING MY COURSE. IT WAS A TRULY FANTASTIC EXPERIENCE, ONE THAT I INTEND TO MAKE POSSIBLE FOR SOMEONE ELSE WHEN I AM FINANCIALLY ABLE, SO YOUR GIFT IS ONE THAT WILL KEEP ON GIVING."** *George Guthrie, Lifeline Community Partnership*

**"I WRITE TO SAY THANK YOU, IN WHICH I AM TRYING TO EXPRESS A GRATITUDE I ACTUALLY CAN'T PUT INTO WORDS, BECAUSE THE FINANCIAL CONTRIBUTION I RECEIVED FROM PUB CHARITY GAVE ME THE OPPORTUNITY TO HAVE THE MOST REWARDING, CHALLENGING, LIFE CHANGING, MOTIVATING THREE WEEKS OF MY LIFE."** *Annabel Bonnor, MBS April 2011*



PHOTO | GEORGINA GUTHRIE AND HILLARY WATCH AFTER FINISHING THEIR MARATHON



## IAG – LIVING THE ATTITUDES

In our Summer 2011 issue, we profiled IAG New Zealand, whose staff, through their 'Living the Attitudes' corporate values programme, raised over \$27,000 for Outward Bound.

Living the Attitudes focused IAG New Zealand staff on living one Attitude (Inspiring, Together, Give Back, Real and Achieving) each month, and as part of the last month set their target to raise funds for Outward Bound. They chose Outward Bound because we were seen as an achievement focused charity.

IAG New Zealand's donation supported 17 individuals from all over New Zealand, including people affected by the devastating Canterbury earthquakes, as well as our community partnerships with Youthline, Search & Rescue, Foundation for Youth Development, and McAuley High School.

"The old saying of "together we can make a difference" is so true in what we try to achieve at Outward Bound. The staff at IAG New Zealand have again shown this to be true as their efforts have helped unlock the potential of another 17 New Zealanders" *Trevor Taylor, Outward Bound CEO*

**"I CAN HONESTLY SAY THE EXPERIENCE HAS CHANGED THE WAY I VIEW LIFE. I WOULD LIKE TO THANK IAG NZ FOR THE FINANCIAL CONTRIBUTION THAT ALLOWED ME TO GAIN THE SKILLS THAT WILL BENEFIT ME IN THE FUTURE."**

*Steve Shaskey, Pukekohe*

**"IT IS AMAZING HOW A GROUP OF STRANGERS WITH POSITIVE ATTITUDES AND SHARED ENTHUSIASM CAN BRING BACK A PERSON'S SELF-CONFIDENCE. I THANK THE TEAM AT IAG NEW ZEALAND FOR THE HUGE MONETARY SUPPORT GIVEN TO ME."**

*Tina Anderson, Dunedin*



## MY JOURNEY TO OUTWARD BOUND

My journey to a better quality of life and well being began 22 months ago, through a self-inflicted revelation of poor diet, unhealthy work life balance, obesity and lack of exercise.

I had been diagnosed with Gout, a common illness to many of our Pacific men. In my late thirties I had numerous acute Gout attacks which led to weeks of being bed ridden and hospitalised with excruciating pain and depression. This robbed me of my time with my family, work and church commitments. Consequently, I promised myself that change was inevitable otherwise I would be vulnerable to other common illnesses such as high blood pressure, diabetes, osteoarthritis, asthma and heart conditions. I wanted to be around for a long time for my wife and seven children, therefore I wanted to model the importance of healthy eating, healthy living and exercise.

In September this year I embarked on my intrepid journey to the legendary Outward Bound School nestled in the beautiful Marlborough Sounds.

The 8 day Discovery course was everything that I had expected it to be; tough and challenging. We had 16 hour days full of adventure, running, kayaking, rock climbing, tramping, high ropes, sailing, going solo plus living, sharing, caring, serving and encouraging 13 complete strangers through elements of cold, sleep deprivation and notorious 'wet feet'.

I had several highlights including the personal challenge of being stretched emotionally, spiritually and psychologically. The physical challenges pushed my pain threshold equal to getting my "tatau", my full body tattoo.

I was inspired by a couple of my colleagues at Outward Bound who just turned 60 as they completed the challenges embarrassingly better than me. I reflected that many of my Pacific peoples are settled and happily retired at this age with physical activity at the lower spectrum of priorities in life.

**WHAT HAS "STUCK" FROM OUTWARD BOUND IS THAT GOALS ARE ACHIEVABLE HEAVILY WEIGHTED ON MENTAL ATTITUDE, CAPACITY AND STAMINA DEEP WITHIN TO ACCOMPLISH ALL LIFE GOALS AND CHALLENGES.**

My journey for a better quality of life now continues with other goals and challenges ahead where healthy living and well being is not only a passing phase, but a continual lifestyle.

Finally, I would like to take this opportunity to acknowledge with sincere gratitude and much appreciation Julie Thompson and the team at Volunteer Wellington for making the Outward Bound scholarship available to me, Dale McFarlane at the Salvation Army Hope Centre for giving me the time off work to attend Outward Bound, to Janine Ready (Outward Bound nurse) for her encouragement, and Outward Bound for a life changing experience.

*Ollie Seumanufagai, Discovery 561 September 2011*

## YOU NEVER KNOW WHAT COULD HAPPEN...



**"OUTWARD BOUND HONG KONG HAS BEEN A POSITIVE EXPERIENCE AS I CONTINUE TO DEVELOP MY SKILLS AND MAKE THE MOST OUT OF EVERY OPPORTUNITY."**

# WHERE ARE THEY NOW?



In a previous Cutter we let you know about Shaun Rolston and his quest to become an instructor at Outward Bound Hong Kong. Shortly after arriving in Hong Kong, Shaun was told that he could not be trained to be an instructor due to a recent change in their age policy. We've had an update from Shaun since, and things are again heading onwards and upwards!

From learning that I could only stay for three months and run kids' courses, to now, a year later, as an instructor at Outward Bound Hong Kong, passing on the Outward Bound spirit to a wide range of participants.

So what happened? How did it all change? I learned that if you never ask, you never know. I was not happy with the fact I had to leave because I did not meet Outward Bound Hong Kong's new age requirement, so I wrote a letter to the Executive Director. After the biggest meeting of my life, they listened to me and it was decided that since my birthday was only four months away, they would allow me to start a three year contract on my 21<sup>st</sup> birthday in February.

Then came the training. The ropes course was first on the agenda, and with a big smile on my face, I climbed up the pole. Sea kayaking was next; rolling a kayak and learning the different techniques that I would need to teach the participants. Sailing was an awesome experience, and it is a sport I really love; now I race boats on my time off.

**"I WAS GIVEN THE TOOLS I NEEDED TO RUN A SUCCESSFUL OUTWARD BOUND COURSE."**

After the training, I took a quick trip back to New Zealand to give my Mum away at her wedding with my brother and sister. Then it was back to Hong Kong to complete a 7 hour wilderness first aid training. Next I took a trip over to Outward Bound Taiwan for the International Sea Triathlon where my team came 6<sup>th</sup> out of 21 teams in a 15km kayak, 5km run and 1.5km swim. This was another opportunity to challenge myself, and build connections with other Outward Bound staff.

I was given the tools I needed to run a successful Outward Bound course, and it was time to run my first course on the 8<sup>th</sup> of February. The review session at the end of the course was amazing; it reminded me of my self-reflection on my Outward Bound New Zealand course and the spark that lit the fire within me.

Outward Bound Hong Kong has been a positive experience as I continue to develop my skills and make the most out of every opportunity. I look forward to spending the next three years at Outward Bound Hong Kong, and hope to return to become an instructor for Outward Bound New Zealand.

*Shaun Rolston*

PHOTO | SHAUN ROLSTON INSTRUCTING AT OUTWARD BOUND HONG KONG

## KUPE WATCH

### Amy Sutton

I am living in Christchurch and am now a preschool teacher (I work with the under 2s). When I was doing the rock climbing at Outward Bound, my instructor Bex yelled up to me and asked what my goal was for my future. In a loud voice I replied to her and said I wanted to be an early childhood teacher. Five and a bit years later, and after three years' study, I am a trained early childhood teacher! I am also a Rover and Cub Leader for Scouts New Zealand and love working with my church and community.

**MIND BODY SOUL 488 (JULY 2005)**

## RUTHERFORD WATCH

### Chris Vernon

I now work in West Auckland as a social worker for A Supported Life with disabled adults in their own home. The ethic I take into my work, from what I learnt on my course, is to present opportunities to the residents through employment, training and social activities in the community. The biggest gift I got from attending Outward Bound was to become serious with my running. I have now run four marathons and in 2003 ran the Kepler Challenge. I attended the 30 year celebrations at Anakiwa in 1992, the 40 year celebrations in 2002, and look forward to catching up again in 2012 for the 50 year celebrations.

**CLASSIC 191 (AUGUST 1980)**

## RUTHERFORD WATCH

### David Short

I am currently based in Christchurch studying towards a degree in Medicine. In the years following my Outward Bound course in 2004 I have completed an honours degree in Applied Science, spent a year exploring the rivers and mountains of the West Coast and decided to pursue a career as a rural/wilderness doctor. Outward Bound gave me the confidence to dream big, do the hard yards and live my life on my terms.

**CLASSIC 480 (DECEMBER 2004)**

## SHARE YOUR JOURNEY

Email [info@outwardbound.co.nz](mailto:info@outwardbound.co.nz) with your watch name, year, and tell us what you are doing now.

## OUTWARD BOUND WELCOMES NEW PRESIDENT AND CHAIR OF MEMBERS COUNCIL

The Annual General Meeting of the Outward Bound Board and Council was once again held at Anakiwa on the 29-30 October.

After 25 years of involvement with Outward Bound Dynes Fulton, whose term as President ended at the AGM, elected to stand down from the Board due to his commitments as Deputy Mayor of the Waikato Regional Council. Dynes will however retain his connection with Outward Bound remaining on the Members Council. At the Board Meeting following the AGM, Bruce Cardwell was elected Board Chair and President of Outward Bound. Dick Hubbard, Dave Tibby, and Helen Fletcher were reappointed for a further 3 year term.

In recognising the contribution of Dynes, new President Bruce said "It is a tradition at the end of each Outward Bound course for our students to receive their course completion certificate. While Dynes will be staying on as a member of the Members Council, it is appropriate that we formally record the finish of this course by presenting him with his Outward Bound course certificate, which reads "Dynes Fulton – in recognition of outstanding service to Outward Bound as a Councilor, Board Member and President from 1986 to 2011"

A standing ovation was accorded to Dynes as a gesture of respect and appreciation to his contribution to Outward Bound.

Nick White also completed his term as Chair of the Members Council, with Grant Faber being appointed as the new Chair of the Members Council. Nick was warmly thanked for the dedication and hard work in put into the establishment of the Members Council. New appointments to the Members Council were Alia Mabey, Steve Cutler and Angela Cushine

Other memorable moments from the weekend was the superbly presented (as always) meals by Chef Paul Hayde and his team; the evening dinner held outside on the main lawn and the terrific atmosphere during the evening evident as instructors, staff, council and board members mixed warmly. A highlight of the evening was the moving presentation by Alumnus Claire Anderson. She shared her story of courage in overcoming personal tragedy and illness, and how Outward Bound turned her life around to become an Ironman competitor, and to establish an Outward Bound Scholarship fund.

**LOOKING FORWARD TO THE 50<sup>TH</sup> ANNIVERSARY YEAR IN 2012,  
OUTWARD BOUND HAS MUCH TO BE PROUD OF!**



**BRUCE CARDWELL**  
President & Chair of the Board

"From an instructor, school director, board member to chair! I seem to have had a long relationship with Outward Bound. I am an Aquaculture consultancy based in Marlborough. I aim to achieve a greater cultural diversity at Outward Bound and increase student numbers."




**GRANT FABER**  
Chair of Members Council

"Having worked in a number of countries I am passionate about New Zealand's future however we need to have more belief in ourselves. Through Outward Bound we can all work towards bringing this realisation to our youth through building a stronger organisation."

**ride the bike  
grab the paddle  
run the track  
push the limits  
live the dream™**

**Return to Anakiwa.**  
We're inviting Outward Bound participants from the last 50 years to return to Anakiwa and race in a special Kathmandu Adventure Series. As a proud sponsor of Outward Bound and to celebrate 50 great years, we're giving you the chance to run, kayak and mountain bike in the Anakiwa region once again. Grab a friend and register for the March 31, 2012 race today.  
For further details and online entry visit [www.kathmanduadventure.co.nz](http://www.kathmanduadventure.co.nz)



**“THE EVENT GAVE STAFF AN OPPORTUNITY TO ‘WALK THE TALK’ AND LIVE OUTWARD BOUND’S FUNDAMENTALS.”**

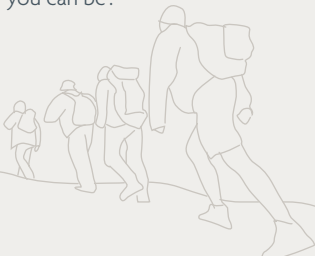
## STAFF ADVENTURE...



It was a moment I'll never forget. A quite surreal yet defining moment looking at my team mates' eyes shining in the light of my head torch as we howled like crazy werewolves at the moon. At least we still had our sense of humor and fun!

It was the moment we all realised that this leg was going to take us longer, much longer, than our estimated 16 hours and more importantly, longer than we'd packed food for. Those Back Country meals sitting somewhere in our gear at the next check point would taste good now. Midnight was only minutes away and we'd been on our feet since 8am. We knew now that we'd still be walking at sunrise.

Welcome to Resolution 2011, a staff training adventure and opportunity to “Be everything you can be”.



As Outward Bound's Training Manager, I organise and oversee staff training for the instructing team at Anakiwa. We are fortunate to be part on an organisation with an ethos of training and development, so for 15 days every year all our instructing team come together for staff training. The broad range of skills and competencies required by an instructor at Outward Bound New Zealand is reflected in the type of training we do. In any given year we might undertake training in First Aid, River Rescue, Cutter Sailing, Facilitation, Launch Handling, Rock Rescue, Judgment and Decision Making. Because of the dynamic nature of our instructing team (on average we employ 8 new instructors every year), it is also important to regularly schedule events that challenge and replicate an Outward Bound type experience for staff. After the success of a similar event in 2009, staff training in the form of an adventure race was organised as an ideal way to achieve this.

The event gave staff an opportunity to “walk the talk” and live Outward Bound's Fundamentals (our guiding values, objectives and design principals). Student empathy was an important outcome as each of us got to have an Outward Bound moment in some shape or form. Maybe it was pushing ourselves physically or mentally harder than we normally would, or stepping up and taking on responsibility in a leadership role for our team. Some of us discovered compassion

and service in reaching out to help our team mates when we were feeling strong and they were struggling, while others found they had the integrity and honesty to accept help when they needed it.

The event concept was simple. In a team of five, the object was to move across a set course using several disciplines, and travelling day and night. Navigation and tactical decision making was vital, as was the ability to remain focused when tired and sleep deprived.

Starting at Wanganui Inlet on the South Island's West Coast, we sea-kayaked, mountain-biked and walked across some of the most spectacular parts of Golden Bay and Kahurangi National Park, finishing three days later at Tata Beach on the western edge of Abel Tasman National Park. For many the highlight was paddling around Cape Farewell, but I think for our team the final mountain bike leg was as much a highlight because it was when we found that special synergy that makes a high-performing team.

Although racing was something we all aspired to do, in reality some teams were faster than others and the primary objective was to get everyone safely to the finish line. To this end every team was a winner, as 100% of the teams made it to the finish line.

*David Mangnall,  
Outward Bound Training Manager*

**PHOTO | TOP** THE TROOPS HEAD OUT ON THEIR KAYAK LEG AT WHARARIKI BEACH, GOLDEN BAY. **ABOVE** ROB MACLEAN AND PHILLIPA RUSSELL PLAN THEIR ATTACK.

**“IT IS THE PRIDE OF OUR FLEET AND WE’RE VERY LUCKY TO HAVE IT BACK.”**

## CUTTER RE-LAUNCH

Five months after the Outward Bound cutter, the Matahorua, was damaged during a collision with a Dolphin Watch Ecotours catamaran, the Matahorua is repaired and back on the water.

The relaunch celebration was held in July at Carey’s Boatyard where the repairs took place, in Picton. A crowd gathered with Outward Bound alumni and staff, representatives from the emergency services and local residents eager to see the newly repaired Matahorua head down the slipway into the water.

Phillip Early, the student who waved the red distress flag after the collision, was present at the event and got on board to wave the flag once again, this time in celebration.

Outward Bound CEO, Trevor Taylor, was very pleased with the relaunch, “It is great to see the Matahorua back in the water. After the incident, we thought we had lost it, but with the dedication and professionalism shown by both the Outward Bound maintenance team and Carey’s Boatyard staff, it is back in one piece.”

Trevor received many phone calls and emails from Outward Bound alumni expressing their concern about the damaged cutter, “I got the feeling of real ownership of the cutters from our alumni, as it is such a big part of what we do,” he said.

The Matahorua was taken to Carey’s Boatyard for repair by boatbuilders Keith Henson and Trevor Cozens. Mr Henson described it as a challenging pleasure, “When you see how badly damaged it was... it’s come up nice. There was nothing manufactured. Every plank had to be separately fitted and it’s made up of three layers of planks.”

Seven hundred hours of work by Carey’s Boatyard put the \$180,000 cutter back together. The \$75,000 repair bill is covered by insurance.

Outward Bound School Director, Rob MacLean, said all four of the Outward Bound cutters were special, but the Matahorua was particularly so. “It is the pride of our fleet and we’re very lucky to have it back.”

Mr Taylor explains, “The Matahorua has diagonally-plyed fibre glass panels and was able to withstand the impact from the catamaran that our other traditional cutters would have struggled with. This incident has highlighted that our older cutters need renewing.”

Outward Bound intends on raising funds to replace the three older cutters. A key requirement however, is that they keep their traditional look and design, as the challenge of sailing the vessels is part of the Outward Bound experience.



PHOTO | PHILLIP WAVING THE DISTRESS FLAG AFTER THE COLLISION

# HELP US

## KEEP THE TRADITION ALIVE FOR ANOTHER 50 YEARS

For the past 50 years the Outward Bound clinker built cutters have been sailing the waters of the Queen Charlotte Sound. They have been instrumental in helping over 50,000 New Zealanders unlock their potential. As these boats are now reaching the end of their lives, we need your help to keep the tradition alive so that the next 50,000 New Zealanders have the same opportunity.

The **Endeavour II** and **Resolution** were both built in 1975, the **Rotorongatai** in 1990 and due to rot, are becoming expensive to maintain. The new cutters will be modelled on the recently rebuilt diagonally plyed fibre-glass Matahorua, so the look of the traditional cutter will be maintained, but their capability and strength improved. We aim to replace one cutter each year in 2012, 2013 and 2014. The cost estimate is \$200,000 per cutter.



## I'D LIKE TO HELP OUTWARD BOUND BUILD NEW CUTTERS!

We have set up a separate Trust account for all donations to be received. Donations can be made by using this form.

Name ..... Address .....

Phone ( ) ..... .....

I have completed an Outward Bound course YES  NO

Town/City..... Postcode .....

### TICK HOW YOU'D LIKE TO HELP US:

I'd like to make a donation towards re-newing the Outward Bound cutters.

\$500     \$1,000     \$5,000     \$10,000

Other Amount \$ .....

Thank you! All donations no matter what size make a difference!

TOTAL \$ .....

### PAYMENT DETAILS:

I enclose a cheque

I'd like to pay by credit card

Credit card details:  Mastercard     Visa     Amex

Card number..... Expiry date .....

Cardholder's name.....

Cardholder's signature .....

PLEASE RETURN FORM TO: OUTWARD BOUND • PO BOX 25274 • WELLINGTON • 6146

FOR MORE INFORMATION: PHONE DIANE LEYTEN: 0800 688 927 OR EMAIL [fundraising@outwardbound.co.nz](mailto:fundraising@outwardbound.co.nz) THANK YOU FOR YOUR SUPPORT.

# GET INTO GEAR SHOP ONLINE AT [www.outwardbound.co.nz/merchandise](http://www.outwardbound.co.nz/merchandise)



**\$40**

**Rope T-shirt**

Bright summer colours in our classic OB Rope Tee are proving a popular addition to the barbeque season wardrobe.

COLOURS 



**\$45**

**Fitted Polo**

Wear the courage of your convictions on your Chest with this dressy fitted Polo. Made with a Poly- Cotton blend.

**NEW** MERCHANDISE

COLOURS 



**\$30**

**Water & wind resistant unisex Cap**

The Vor-Tech fabric has a 2 layer structure with a laminated outer nylon fabric providing wind and water resistance.

COLOURS 

# THANK YOU

FOR HELPING US ACHIEVE OUR VISION

## BETTER PEOPLE BETTER COMMUNITIES BETTER WORLD

As the Trust approaches its 50<sup>th</sup> year, it is great to see that the Estates and families of two of its original supporters, Sir Roy McKenzie and Sir Woolf Fisher, are still actively supporting us. Each year we are charged with helping over 1000 young people with financial help, as well as maintaining and renewing operational gear and the facility at Anakiwa - we would simply be unable to do so without the continued support of our wide range of donors. All donations, no matter what size, are key to helping us unlock the potential of New Zealanders!

Thanks to **Geoff Loudon** we have been able to continue providing scholarships to those affected by the Canterbury earthquakes. Recent grants received from the **Joyce Fisher Charitable Trust and New Zealand Community Trust** together with donations from **Claire Anderson, the Estates of David Thomson and Nicola Thomson, Prices Pharmacy, Tanya Hulme, Trevor Farmer, Ross Nevell, David Meares, H W Shaw, Les McGreevy, E R Bidwell, Fenix Foundation, Chris Horne** and members of the **Outward Bound Supporters programme** allow us to continue to not only build on our community partnership programme but to provide valuable 'top up' scholarships to many of our students. We thank also the **Wanganui Restorative Justices Trust** and the **Fred & Eunice Rodie Charitable Trust** for supporting people coming to Outward Bound from Wanganui & Hawera (respectively). We continue to receive support from many **Rotary, Lions and service clubs** who are sponsoring youth in their journey to Anakiwa.

A recent operational grant for the replacement of essential safety equipment from **Lion Foundation** has meant we have been able to save valuable cashflow for other projects. Thanks to **Trillian Trust Inc** and **Infinity Foundation Limited** for their grants to assist in the running of the 'Dinner with Sir Richard Branson' event (see front page).

## WE WISH TO WELCOME ALL NEW FINANCIAL MEMBERS

Proceeds from these memberships have been added to our Membership Scholarship Fund – **thank you** **Timothy Burgess, Angela Cushnie, Alia Mabey, Rachael Neutze, Robert McLeod, Rita Urry, Nicky McArthur, Tom Reynolds, Waarren Anderson, Garth Bateup, and John Garland.**

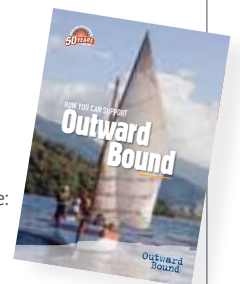
## HOW YOU CAN SUPPORT US

You can help us continue to be a turning point in people's lives by:

- Becoming a financial Member
- Buying a brick in our Foundation Pathway
- Becoming an Outward Bound Supporter
- Setting up a scholarship
- Making a donation
- Setting up a bequest
- Helping with a Major Gift Campaign

### TO FIND OUT MORE

or to request a copy of our Supporter brochure:



**EMAIL** [fundraising@outwardbound.co.nz](mailto:fundraising@outwardbound.co.nz)  
or **CONTACT** Diane Leyten (Finance & Funding Manager) on **04 495 1762.**



## CONTACT US

If you have any questions about *The Cutter* or would like more copies contact:

Christina Arathimos

P: (04) 495 1765

E: [carathimos@outwardbound.co.nz](mailto:carathimos@outwardbound.co.nz)

**0800 OUTWARD**  
[www.outwardbound.co.nz](http://www.outwardbound.co.nz)

